



### □ **G1786** Eye/Face Wash, Pedestal Mounted, PVC Construction with Stainless Steel Valve

**Application:** Free standing, pedestal mounted eye/face wash. Unit is constructed of PVC, PVC-coated components and a stainless steel valve for superior corrosion resistance. Ideal for industrial environments where harsh acids or caustics are present. Two large FS-Plus™ spray-type outlet heads deliver a flood of water for rinsing eyes and face.

**Spray Head Assembly:** Two FS-Plus™ spray heads. Each head has a “flip top” dust cover, internal flow control and filter to remove impurities from the water flow.

**Valve:** 1/2" IPS PVC-coated brass stay-open ball valve. Valve is US-made with chrome plated brass ball and PTFE seals.

**Bowl:** 11-3/4" diameter orange ABS plastic.

**Pipe and Fittings:** Schedule 80 PVC.

**Supply:** 1/2" NPT female inlet.

**Waste:** 2" socket weld female outlet.

**Sign:** ANSI-compliant identification sign.

**Quality Assurance:** Unit is completely assembled and water tested prior to shipment.

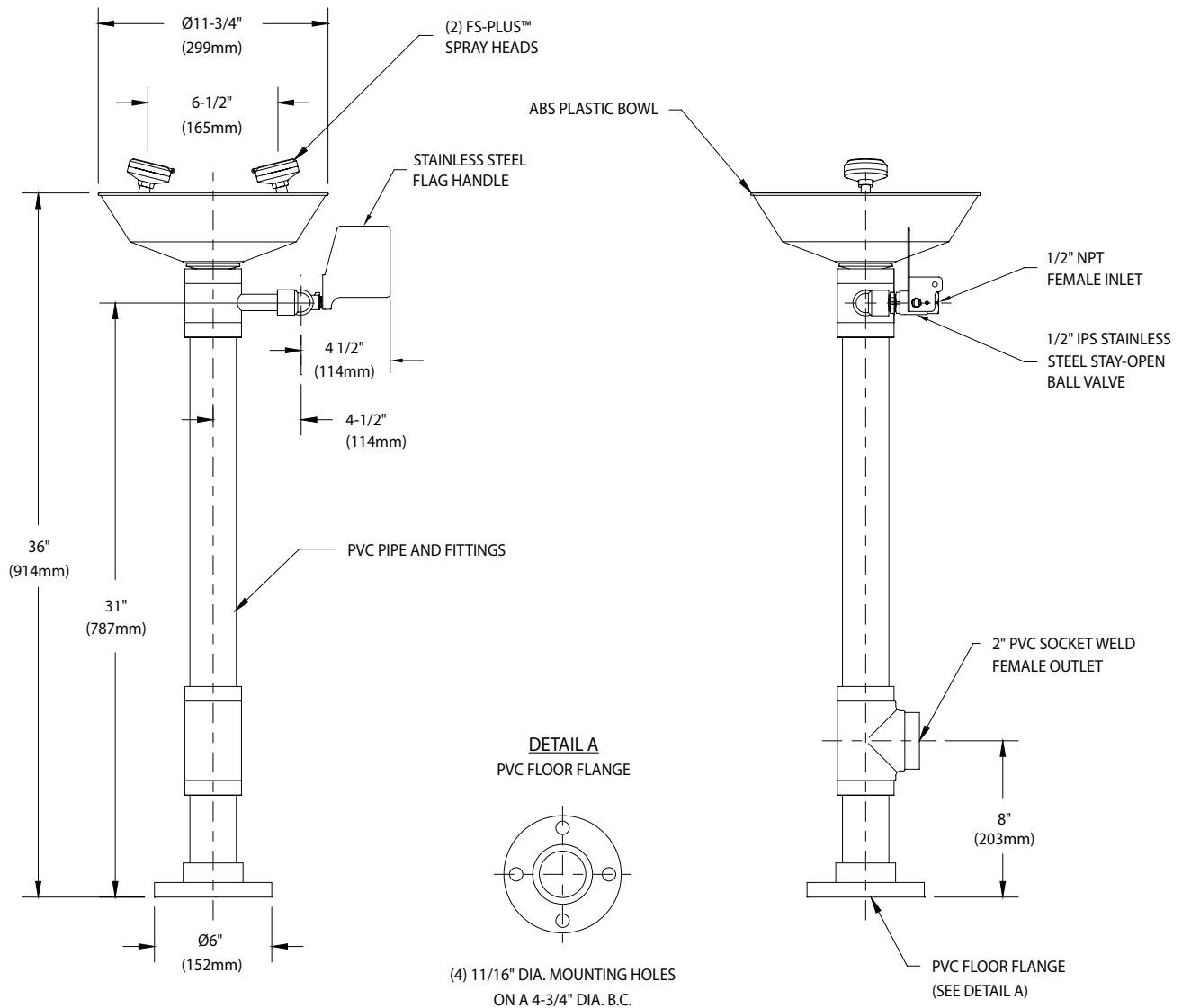
#### Available Options

- **G6020** Thermostatic mixing valve precisely blends hot and cold water to deliver tepid water as required by ANSI Z358.1-2014. Refer to “Thermostatic Mixing Valves” section for complete technical and product selection information.
- **GRN** Green ABS plastic bowl.
- **YEL** Yellow ABS plastic bowl.





### □ G1786 Eye/Face Wash, Pedestal Mounted, PVC Construction with Stainless Steel Valve



**NOTE:**  
EACH FS-PLUS™ SPRAY HEAD HAS A "FLIP-TOP" DUST COVER, INTERNAL FLOW CONTROL AND FILTER TO REMOVE IMPURITIES FROM THE WATER FLOW.

THIS SPACE FOR ARCHITECT/ENGINEER APPROVAL

Due to continuing product improvement, the information contained in this document is subject to change without notice. All dimensions are ± 1/4" (6mm). rev. 021023

Sign Included

